

PIXMA iP5300

PARTS CATALOG

REVISION 0

1439B003AA PIXMA iP5300 / 120V(CA)
1439B008AA PIXMA iP5300 / 220V-240V(GB)
1439B009AA PIXMA iP5300 / 220V-240V(EUM / EMB)
1439B011AA PIXMA iP5300 / 220V-240V(AU)
1439B012AA PIXMA iP5300 / 220V-240V(ASA)
1439B014AA PIXMA iP5300 / 220V-240V(CN)

The Canon logo is displayed in its characteristic bold, serif font.

AUG. 2006

QY8-31CY-000

COPYRIGHT © 2006 CANON INC. CANON PIXMA iP5300 0608 N 0.00-0

Application

This manual has been issued by Canon Inc. for qualified person to learn technical theory, installation, maintenance, and repair of products. This manual covers all localities where the products are sold. For this reason, there may be information in this manual that does not apply to your locality.

Corrections

This manual could include technical inaccuracies or typographical errors due to improvements or changes in the products. When changes occur in applicable products or in the content of this manual, Canon will release technical information as the need arises. In the event of major changes in the contents of this manual over a long or short period, Canon will issue a new editions of this manual. The following paragraph does not apply to any countries where such provisions are inconsistent with local law.

Trademarks

The product names and company names described in this manual are the registered trademarks of the individual companies.

Copyright

This manual is copyrighted with all rights reserved. Under the copyright laws, this manual may not be copied, reproduced or translated into another language, in whole or in part, without the written consent of Canon Inc.

Copyright © 2006 by Canon Inc.

CANON INC.

Inkjet Device Quality Assurance Div. 2

451, Tsukagoshi, 3-chome, Saiwai-ku, Kawasaki-shi, Kanagawa 212-8530, Japan

This manual was created under Microsoft® Windows® 2000.

Parts layout pictures were edited using Adobe® Photoshop® 7.0. KEY No. were created using Adobe® Illustrator®10.

HTML files were created using Microsoft® FrontPage® 2000.

ABOUT THIS MANUAL

A. ILLUSTRATION INDEX

For illustration index, the parts layout illustrations in this parts catalog are listed in abbreviated form in order of illustration number to identify the pages they appear on. To find an illustration of a part, see the ILLUSTRATION INDEX.

B. PARTS LAYOUT & PARTS LIST

Parts layout illustration

a) Parts search

Find a part from the parts layout illustration and find its key number from the parts list to identify the part number and name. For screws, nuts, washers, lock washers, pins, spacers, see SCREWS & WASHERS LIST.

Note: If parts have the same or similar shape but different specifications, their key number is assigned to several part numbers and names in the parts list.

b) Parts replacement procedure

To replace parts, the parts layout illustrations have figure numbers according to the disassembly procedure of the product. The parts that require careful work are shown the illustration.

Parts list

a) FIGURE & KEY No.

The FIGURE & KEY No. column corresponds to the key numbers assigned to the parts in the parts layout illustration.

b) PART NUMBER

The PART NUMBER column gives the part numbers corresponding to the key numbers. To order a part, indicate the part number clearly.

Note: Parts marked NPN are not service parts.

c) RANK

The service parts with N in the RANK column are order parts.

d) QTY

The QTY column gives the number of parts in the corresponding components layout illustration.

e) DESCRIPTION

The DESCRIPTION column gives the part names in English.
To order a part, indicate the part name, too.

C. OPTIONS & CONSUMABLES

These are illustrations and a list of units that can be used as optional consumable equipments.

D. SCREWS & WASHERS LIST

This is a list of screws, nuts, washers, lock washers, pins, and spacers.
The QTY column does not give the number of parts used.

E. TOOL LIST

This is a list of tools used for servicing products.

F. NUMERICAL INDEX

All the parts listed in this parts catalog are arranged in order of part number. You can identify part locations and names from the NUMERICAL INDEX.

Contents

A. ILLUSTRATION INDEX ▶

B. PARTS LAYOUT & PARTS LIST

FIGURE 1 PRINTER & PRINT HEAD

FIGURE 2 AC ADAPTER

FIGURE 3 OPERATION PANEL UNIT & MAIN CASE UNIT

FIGURE 4 BOTTOM CASE UNIT & INK ABSORBER

FIGURE 5 LOGIC BOARD ASS'Y

FIGURE 6 SHEET FEED UNIT

FIGURE 7 CARRIAGE UNIT

FIGURE 8 PLATEN UNIT

FIGURE 9 PURGE UNIT

FIGURE 10 PAPER FEED & CARRIAGE LIFT PART

C. OPTION & CONSUMABLES ▶

D. SCREW & WASHER LIST ▶

E. TOOL ▶

F. NUMERICAL INDEX ▶

This page intentionally left blank

A. ILLUSTRATION INDEX

FIGURE 1 PRINTER & CASSETTE UNIT & PRINT HEAD



FIGURE 2 AC ADAPTER



FIGURE 3 OPERATION PANEL UNIT & MAIN CASE UNIT

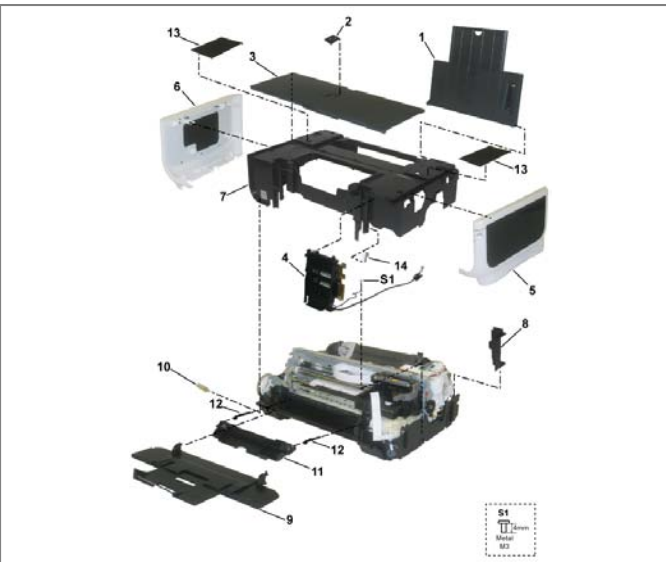


FIGURE 4 BOTTOM CASE UNIT & INK ABSORBER

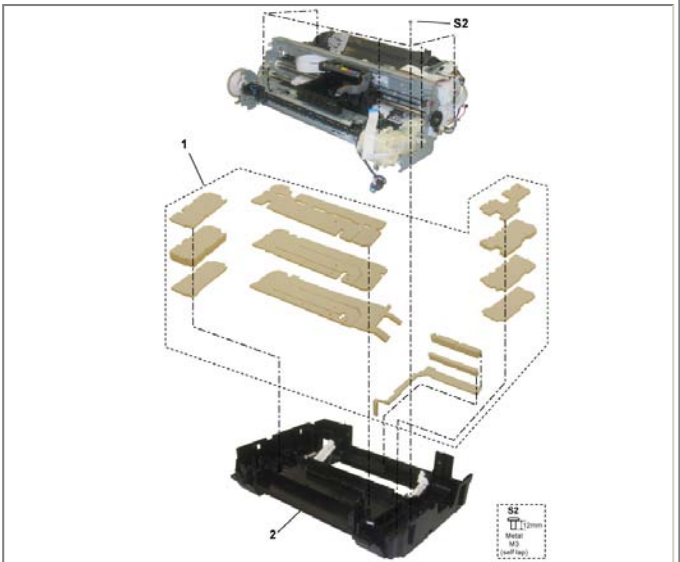


FIGURE 5 LOGIC BOARD ASS'Y

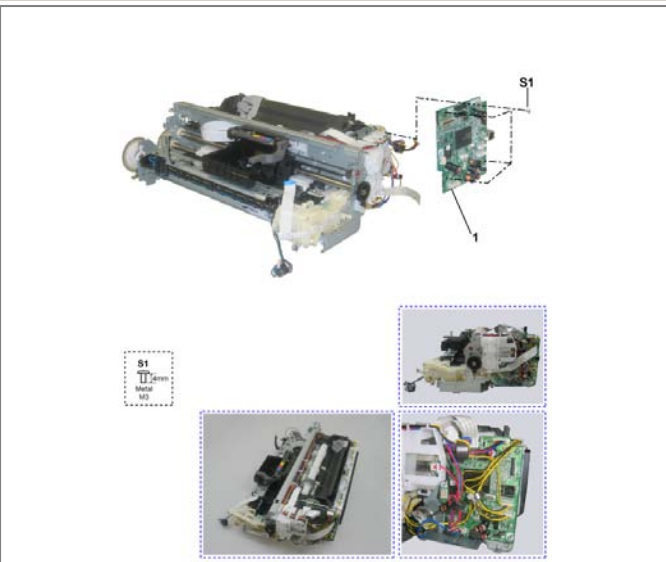


FIGURE 6 SHEET FEED UNIT

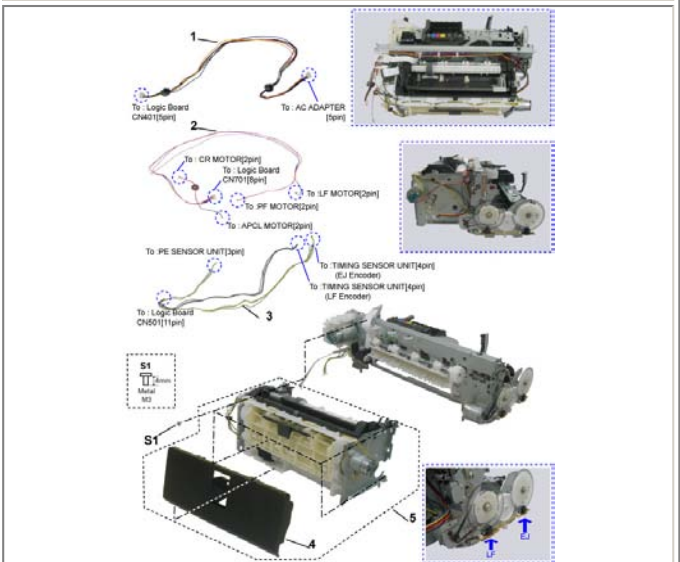


FIGURE 7 CARRIAGE UNIT

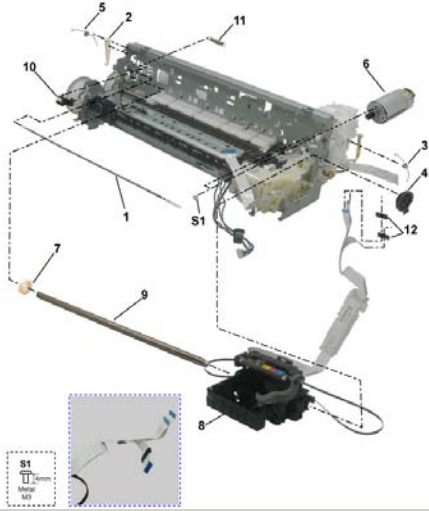


FIGURE 8 PLATEN UNIT

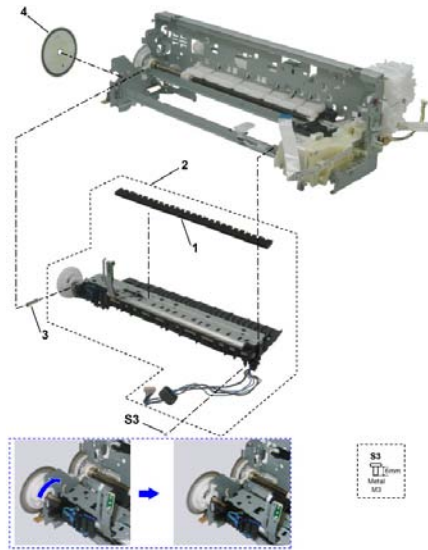


FIGURE 9 PURGE UNIT

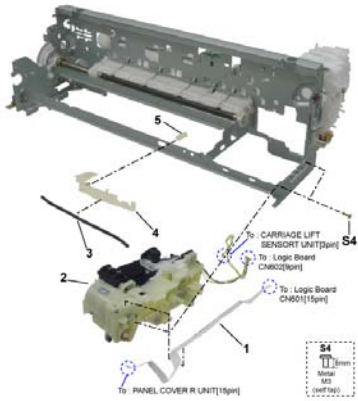


FIGURE 10 PAPER FEED & CARRIAGE LIFT PART

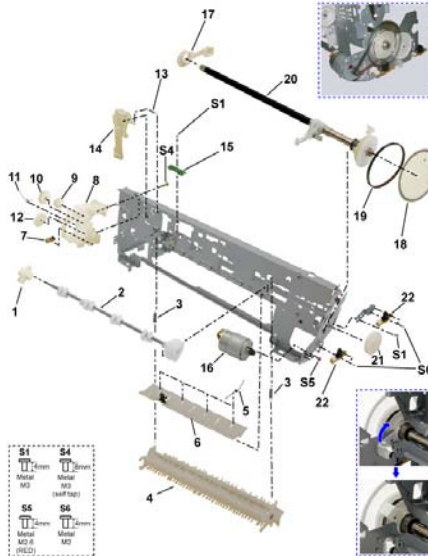


FIGURE 11 OPTION & CONSUMABLES



FIGURE 12 TOOL



B. PARTS LAYOUT & PARTS LIST

Contents ILLUSTRATION INDEX NUMERICAL INDEX

FIGURE 1 PRINTER & PRINT HEAD



FIGURE & KEY No.		PART NUMBER	RANK	QTY	DESCRIPTION	REMARKS
1-	1	QM3-0465-000		1	CASSETTE UNIT	
	2	QC2-1925-000		1	COVER, CASSETTE	
	3	QA4-1117-000		1	TRAY, CD SUB	W/ CDR PRINTING
	4	QL2-1449-000		1	CDR TRAY ASS'Y	W/ CDR PRINTING
	5	QY6-0067-000		1	PRINT HEAD	
	6	QK1-0278-000		1	CORD, POWER	100V-120V(CA)
		QK1-0279-000		1	CORD, POWER	220V-240V(EUM, EMB, ASA)
		QK1-1061-000		1	CORD, POWER	220V-240V(AU)
		WT3-5156-000		1	CORD, POWER	220V-240V(GB)
		WT3-5182-000		1	CORD, POWER	220V-240V(CN)

FIGURE 2 AC ADAPTER

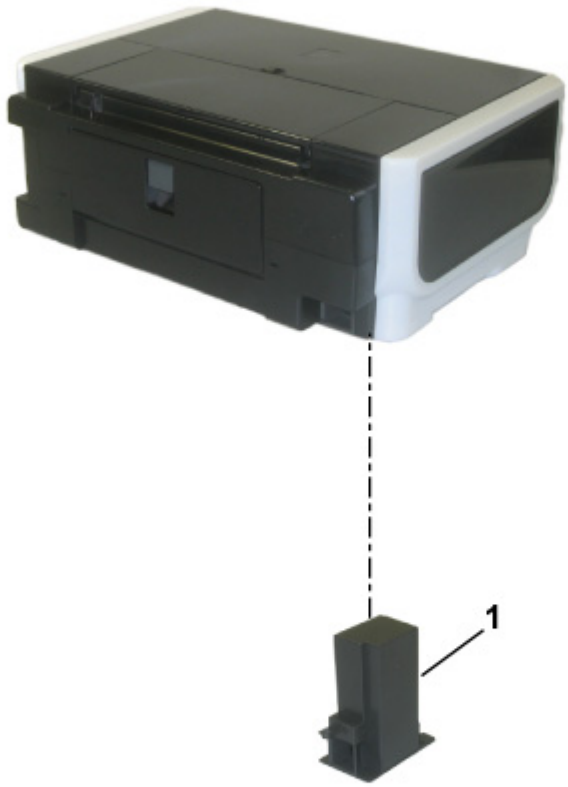


FIGURE & KEY No.		PART NUMBER	RANK	QTY	DESCRIPTION	REMARKS
2-	1	QK1-3031-000		1	AC ADAPTER: 100V-240V 50/60HZ	

FIGURE 3 OPERATION PANEL UNIT & MAIN CASE UNIT

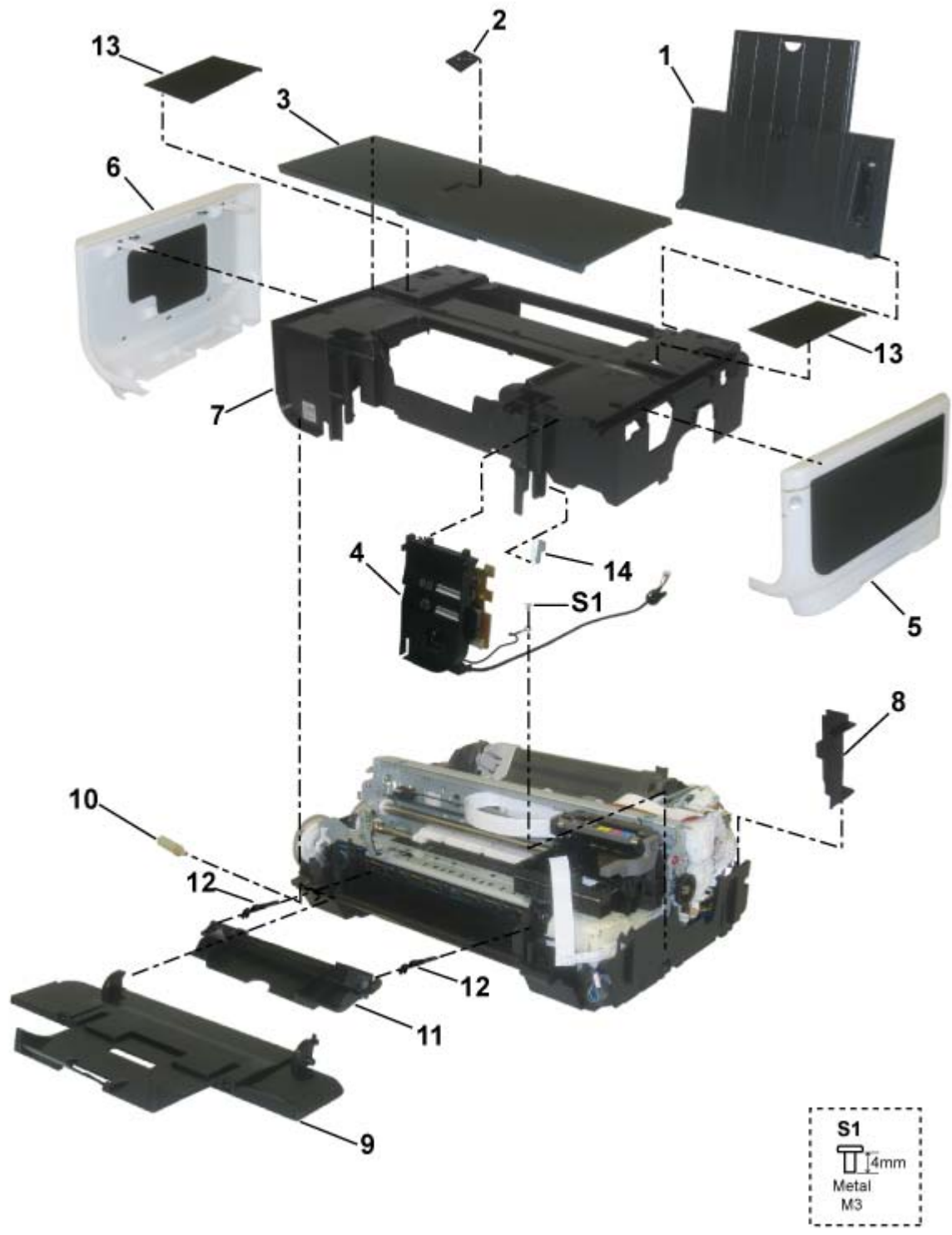


FIGURE & KEY No.		PART NUMBER	RANK	QTY	DESCRIPTION	REMARKS
3-	1	QM3-0012-000		1	PAPER SUPPORT UNIT	
	2	QC1-9024-000		1	EMBLEM, PIXMA	
	3	QM3-0011-000		1	ACCESS COVER UNIT	
	4	QM3-0016-000		1	PANEL COVER R UNIT	
	5	QM3-0014-000		1	SIDE COVER R UNIT	
	6	QM3-0015-000		1	SIDE COVER L UNIT	
	7	QC2-1887-000		1	MAIN CASE	
	8	QC2-1886-000		1	COVER, I/F	
	9	QM3-0013-000		1	FRONT DOOR UNIT	
	10	QC1-6573-000		1	DAMPER, DOOR	
	11	QM3-0017-000		1	INNER COVER UNIT	
	12	QC2-0424-000		2	ARM, RELEASE	
	13	QC2-1911-000		2	COVER, MAIN CASE	
	14	QC2-1877-000		1	COVER, INK MIST	

FIGURE 4 BOTTOM CASE UNIT & INK ABSORBER

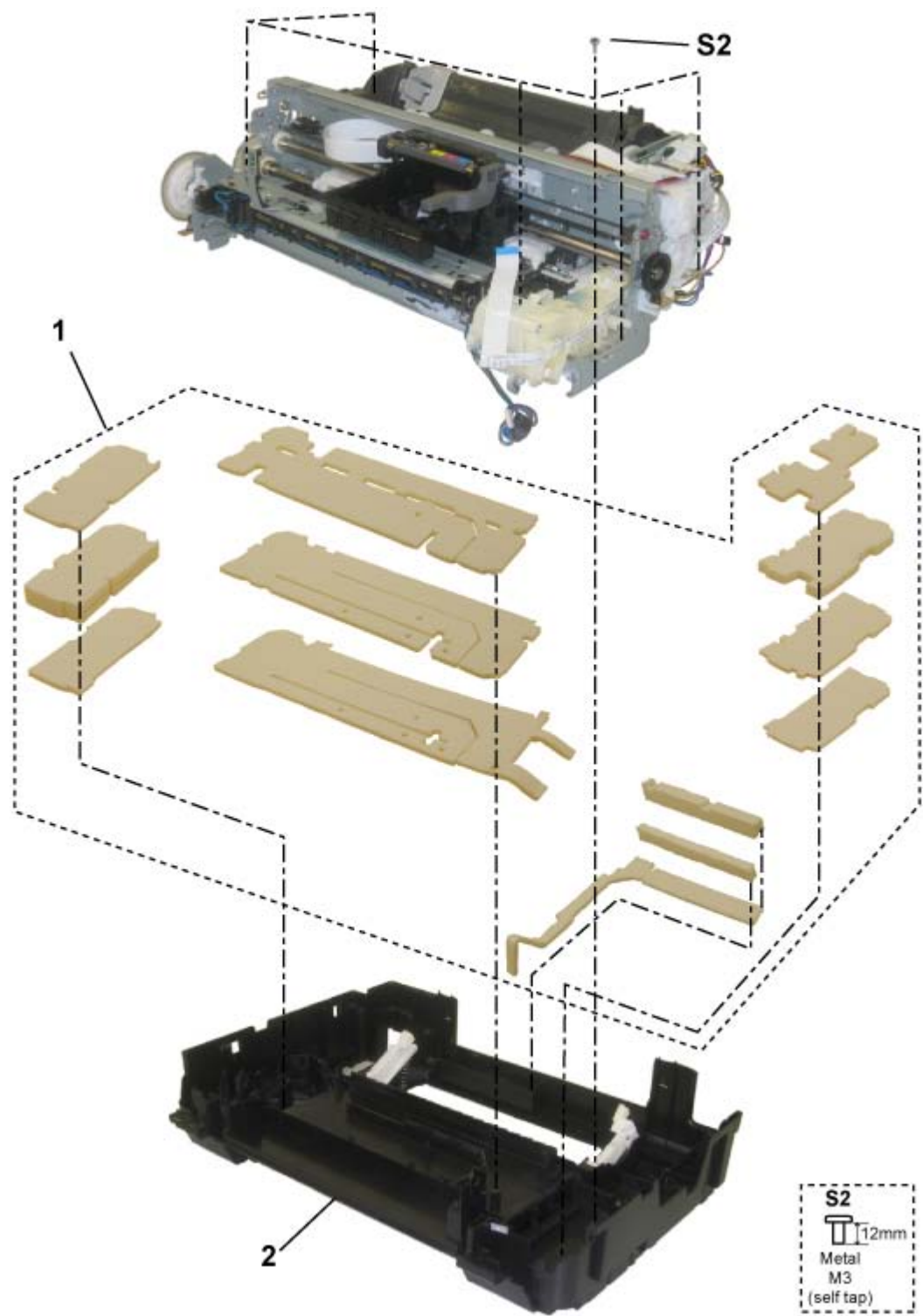


FIGURE & KEY No.		PART NUMBER	RANK	QTY	DESCRIPTION	REMARKS
4-	1	QY5-0179-000		1	ABSORBER KIT	
	2	QM3-0010-000		1	BOTTOM CASE UNIT	

FIGURE 5 LOGIC BOARD ASS'Y

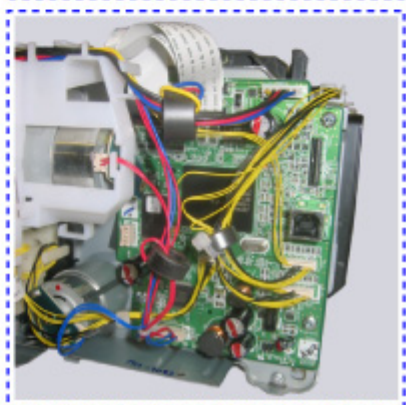
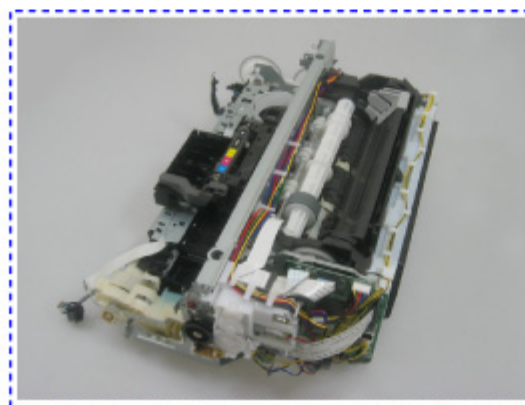
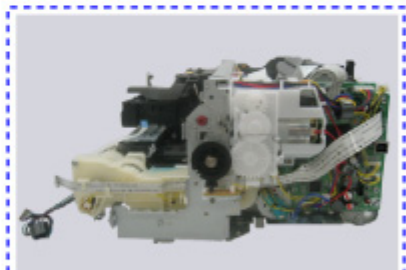
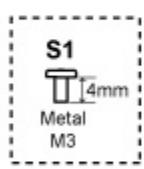
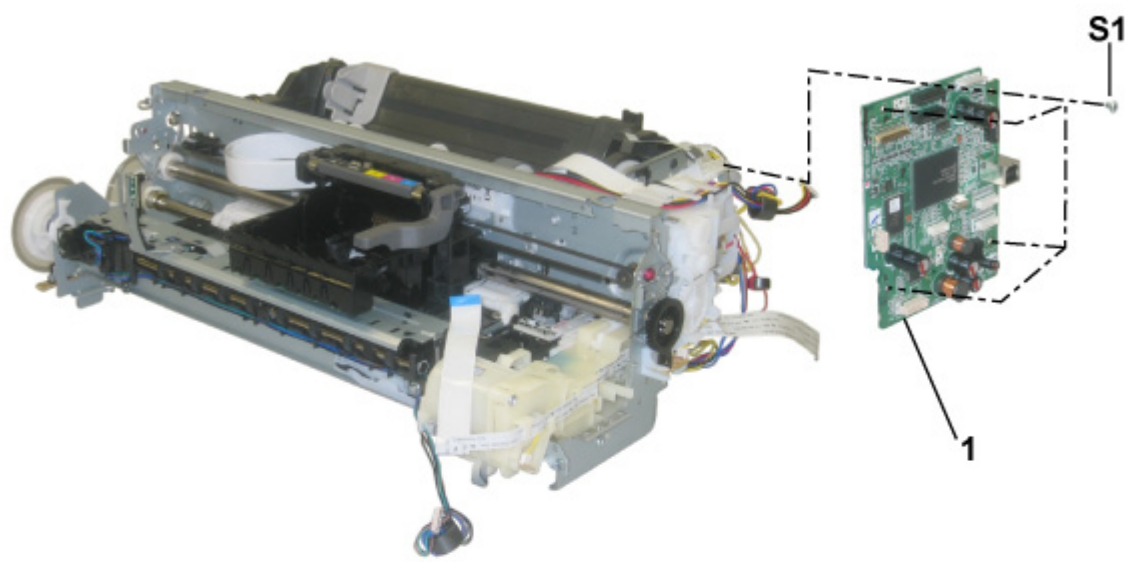


FIGURE & KEY No.		PART NUMBER	RANK	QTY	DESCRIPTION	REMARKS
5-	1	QM3-0833-000		1	LOGIC BOARD ASS'Y	

FIGURE 6 SHEET FEED UNIT

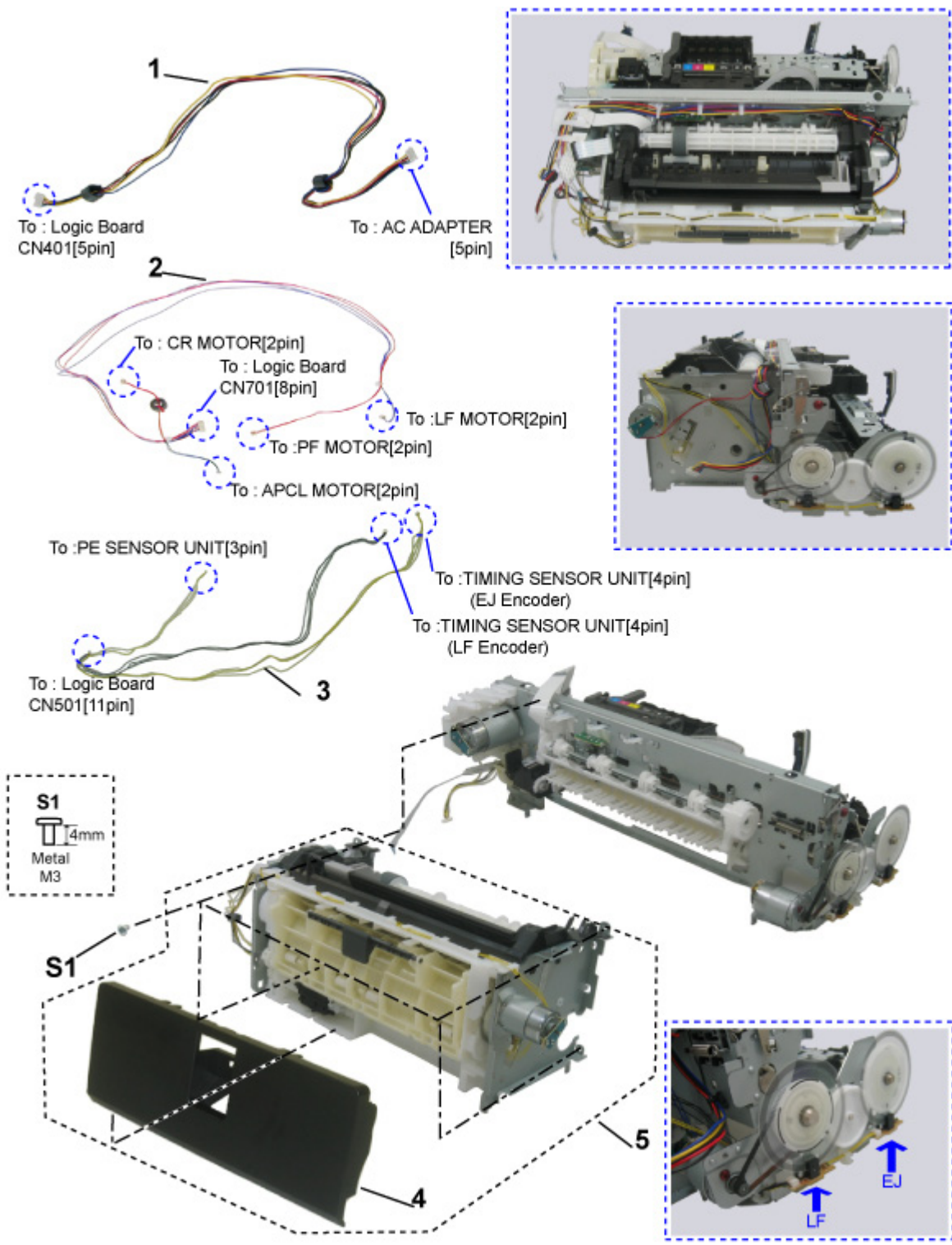


FIGURE & KEY No.		PART NUMBER	RANK	QTY	DESCRIPTION	REMARKS
6-	1	QM3-1292-000		1	DC CONNECTOR ASS'Y	
	2	QM3-1287-000		1	MOTOR MULTI HARNESS ASS'Y	
	3	QM3-0842-000		1	ENCORDER MULTI HARNESS ASS'Y	
	4	QC2-2063-000		1	COVER, PAPER FEED GUIDE	
	5	QM2-3902-000		1	SHEET FEEDER UNIT	

FIGURE 7 CARRIAGE UNIT

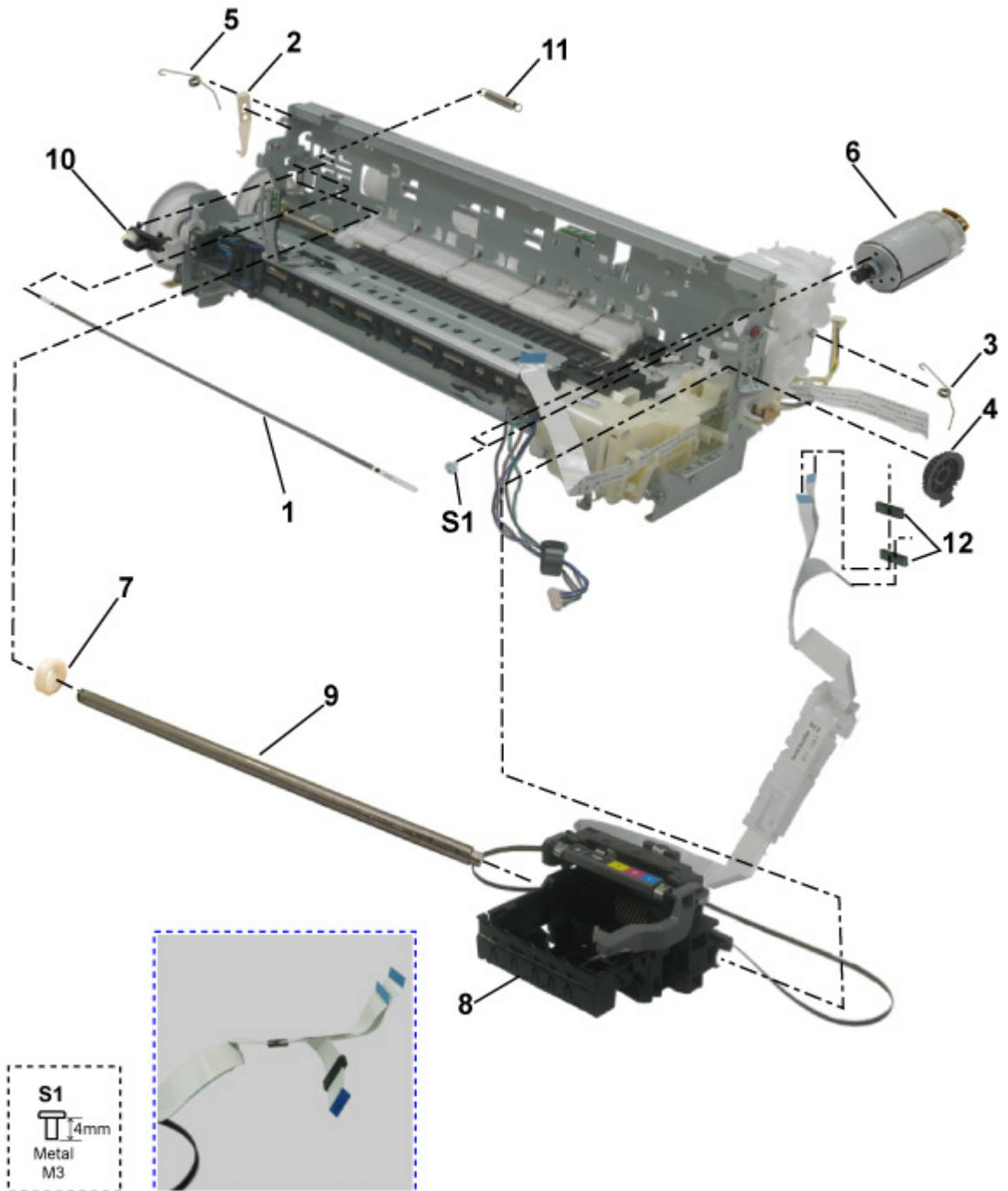


FIGURE & KEY No.		PART NUMBER	RANK	QTY	DESCRIPTION	REMARKS
7-	1	QC1-6526-000		1	FILM, TIMING SLIT STRIP	
	2	QC1-6201-000		1	SPRING, LEAF	
	3	QC2-0080-000		1	CLIP, SHAFT R	
	4	QC2-0010-000		1	CAM, CARRIAGE SHAFT R	
	5	QC2-0083-000		1	CLIP, SHAFT L	
	6	QK1-1500-000		1	MOTOR, CARRIAGE	
	7	QC2-0009-000		1	CAM, CARRIAGE SHAFT L	
	8	QM2-3999-000		1	CARRIAGE UNIT	
	9	QC2-0414-000	N	1	SHAFT, CARRIAGE	
	10	QL2-0938-000		1	IDLER PULLEY ASS'Y	
	11	QC1-6202-000		1	SPRING, COIL	
	12	WE8-6427-000		2	CORE, RING	

FIGURE 8 PLATEN UNIT

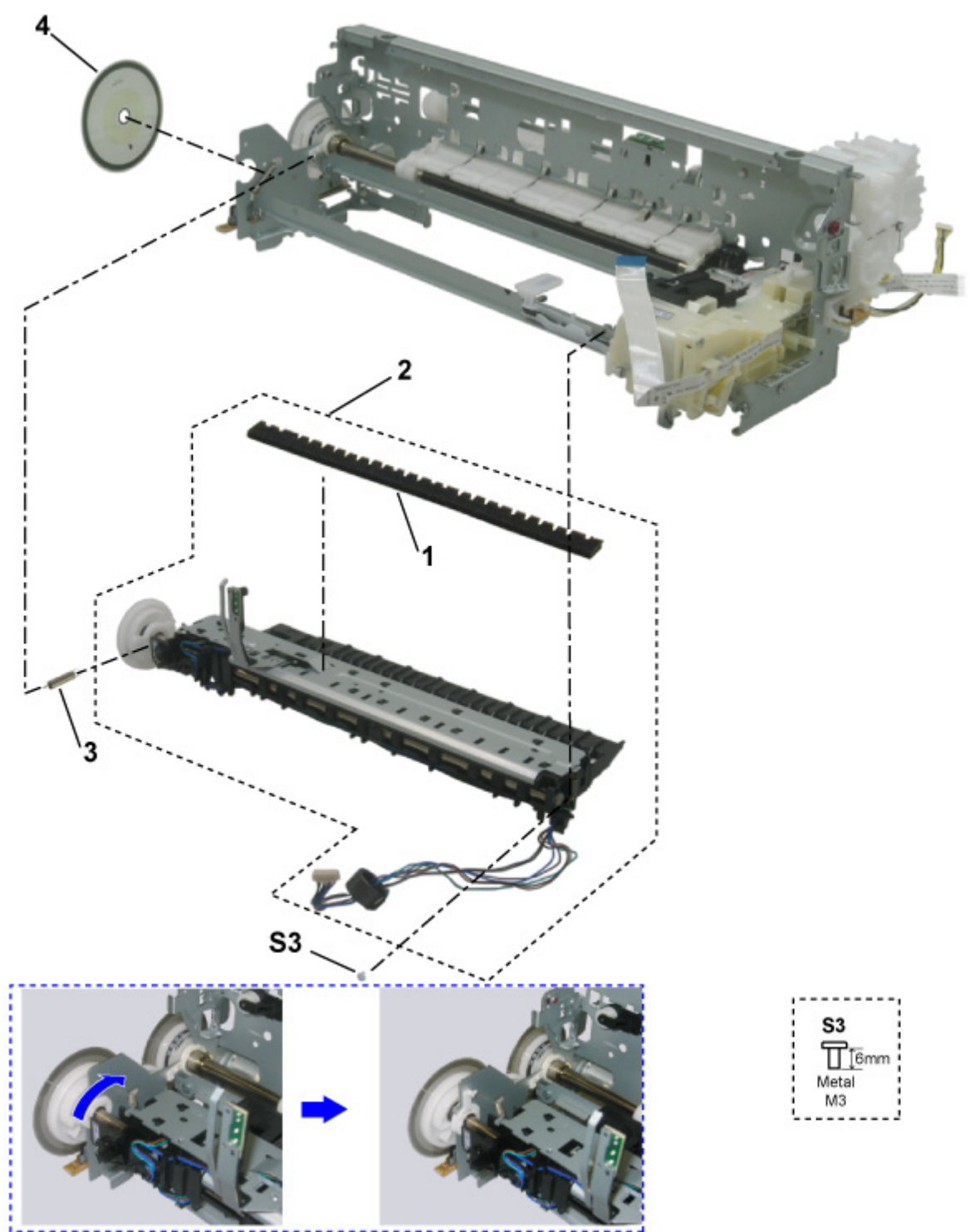


FIGURE & KEY No.		PART NUMBER	RANK	QTY	DESCRIPTION	REMARKS
8-	1	QC2-0435-000		1	ABSORBER, INK	
	2	QM3-0001-000		1	PLATEN UNIT	
	3	QC1-6619-000		1	SPRING, TORSION	
	4	QC2-0476-000		1	FILM, TIMING SLIT DISK EJECT	

FIGURE 9 PURGE UNIT

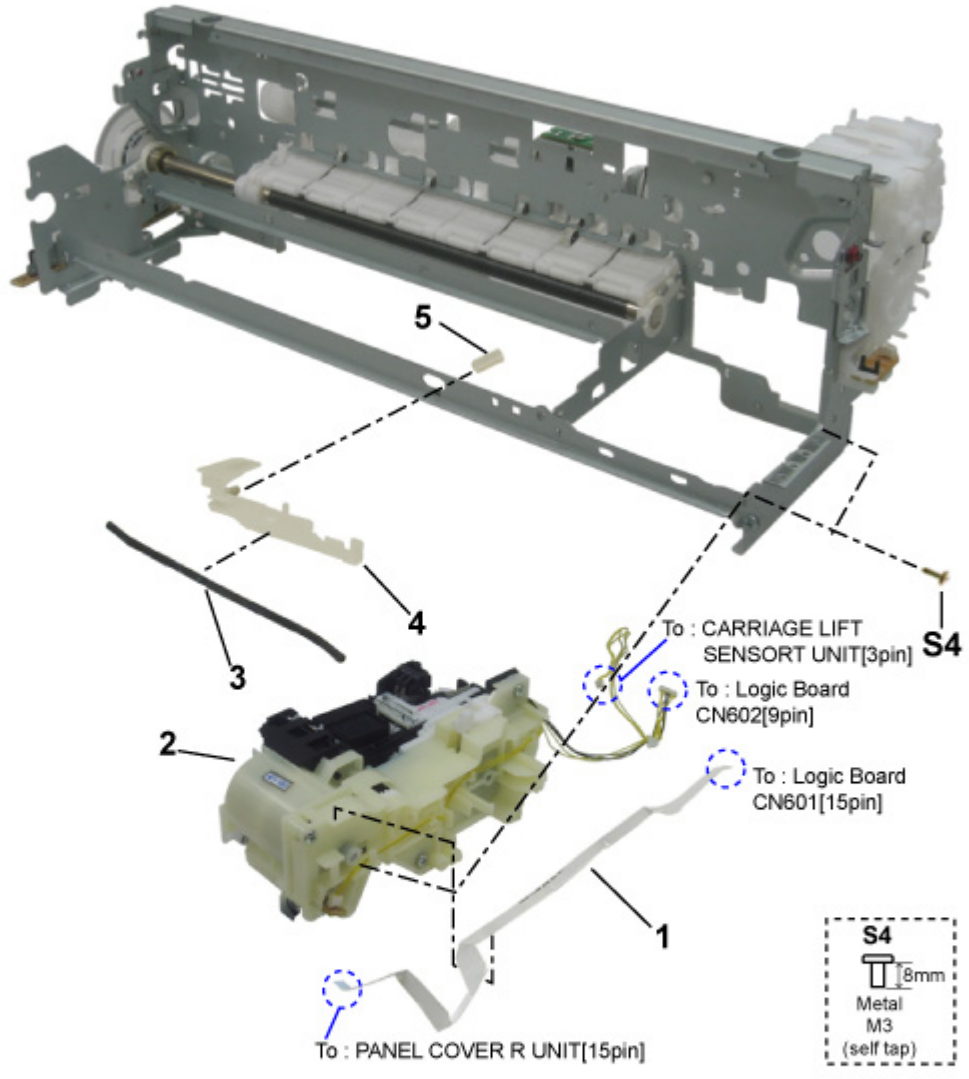


FIGURE & KEY No.		PART NUMBER	RANK	QTY	DESCRIPTION	REMARKS
9-	1	QK1-2830-000		1	CABLE, PANEL	
	2	QM3-0007-000		1	PURGE UNIT	
	3	QC2-0032-000		1	TUBE, INK	
	4	QC2-0030-000		1	COVER, INK TUBE	
	5	QC2-0085-000		1	TUBE, INK JOINT	

FIGURE 10 PAPER FEED & CARRIAGE LIFT PART

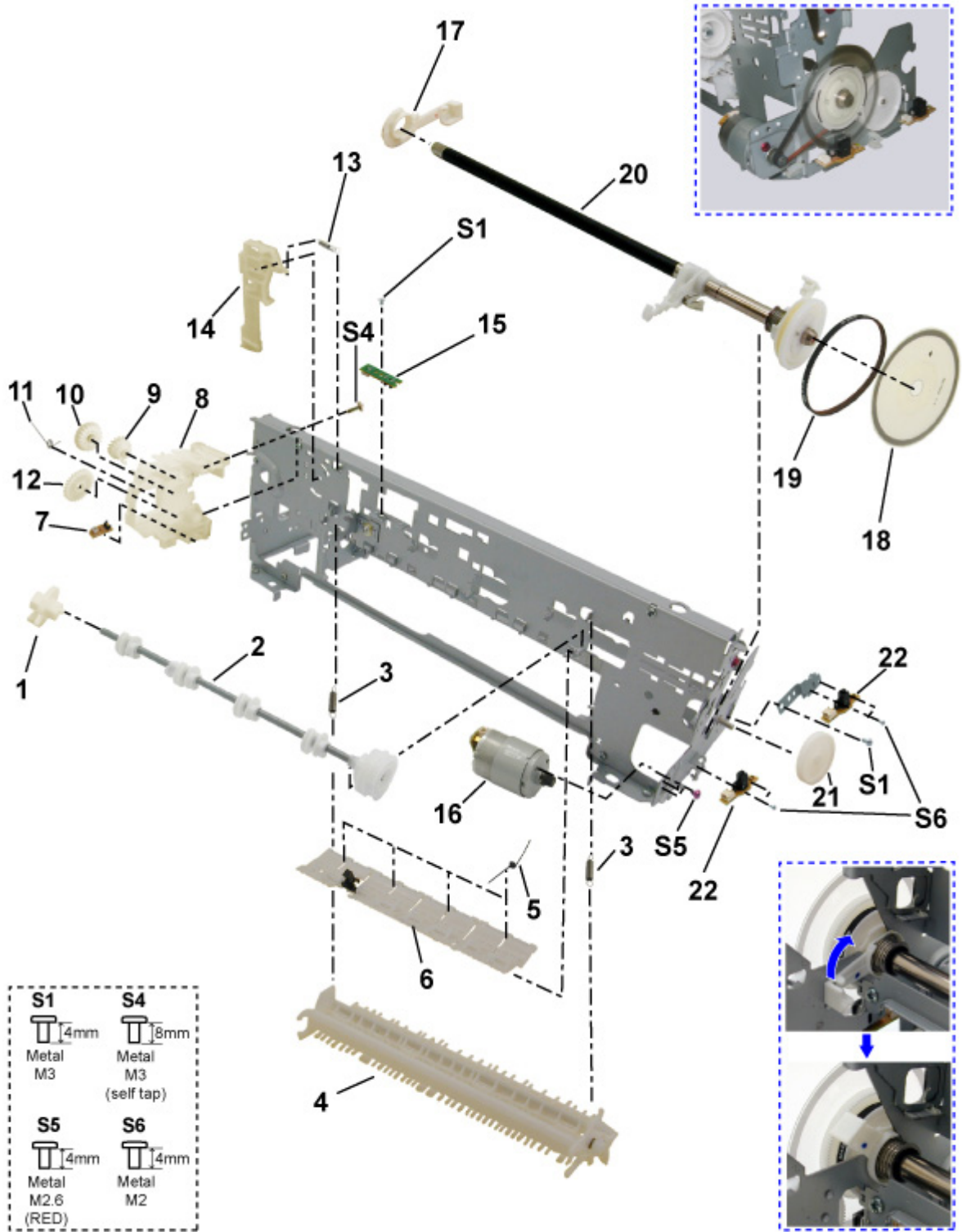


FIGURE & KEY No.		PART NUMBER	RANK	QTY	DESCRIPTION	REMARKS
10-	1	QC1-9941-000		1	CAM, SWING ARM LOCK	
	2	QL2-1450-000		1	PR LIFT SHAFT ASS'Y	
	3	QC1-6232-000		2	SPRING, TENSION	
	4	QM2-3890-000		1	PAPER GUIDE UNIT	
	5	QC1-9937-000		4	SPRING, TORSION	
	6	QM2-3886-000		1	PRESSURE ROLLER ASS'Y	
	7	QM3-1273-000		1	CARRIAGE LIFT SENSOR UNIT	
	8	QC2-0037-000		1	CARRIAGE LIFT GEAR BASE UNIT	
	9	QC2-1873-000		1	GEAR, INPUT CARRIAGE LIFT	
	10	QC1-6212-000		1	GEAR, IDLER CARRIAGE LIFT	
	11	QC2-0039-000		1	SPRING, TORSION	
	12	QC2-0038-000		1	GEAR, OUTPUT CARRIAGE LIFT	
	13	QC2-0052-000		1	SPRING, TENSION	
	14	QC2-0040-000		1	LEVER, SWING ARM LOCK	
	15	QM3-1274-000		1	PE SENSOR UNIT	
	16	QK1-1502-000		1	MOTOR, PAPER FEED	
	17	QC1-9939-000		1	BUSHING	
	18	QC2-0475-000		1	FILM, TIMING SLIT DISK	
	19	QC1-6230-000		1	BELT, PAPER FEED	
	20	QL2-1490-000		1	FEED ROLLER ASS'Y	
	21	QC1-6225-000		1	GEAR, EJECT	
	22	QM3-1271-000		2	TIMING SENSOR UNIT	

C. OPTION & CONSUMABLES

FIGURE 11 OPTION & CONSUMABLES



FIGURE & KEY No.		PART NUMBER	RANK	QTY	DESCRIPTION	REMARKS
11-	1	NPN		1	BLACK INK TANK PGI-5BK	CONSUMABLES
		NPN		1	BLACK INK TANK CLI-8BK	CONSUMABLES
		NPN		1	YELLOW INK TANK CLI-8Y	CONSUMABLES
		NPN		1	MAGENTA INK TANK CLI-8M	CONSUMABLES
		NPN		1	CYAN INK TANK CLI-8C	CONSUMABLES

D. SCREW & WASHER LIST

[Contents](#)[NUMERICAL INDEX](#)

FIGURE & KEY No.		PART NUMBER	RANK	QTY	DESCRIPTION	REMARKS
S -	1	XB1-2300-405			SCREW, MACH.BH, M3X4	
	2	XA9-1258-000			SCREW, TAP, WASHER HEAD, M3X12	
	3	XB2-4300-605			SCREW, W/WASHER, M3X6	
	4	XB4-7300-805			SCREW, TP, BH3X8	
	5	XA9-1437-000			SCREW, BIND, M2.6X4(REDF)	
	6	XB1-2200-405			SCREW, M2X4	

This page intentionally left blank

FIGURE 12 TOOL



FIGURE & KEY No.		PART NUMBER	RANK	QTY	DESCRIPTION	REMARKS
T -	1	QY9-0057-000		1	LUBE, FLOIL KG107A, OIL	

F. NUMERICAL INDEX

PART NUMBER	FIGURE & KEY No.	DESCRIPTION	PART NUMBER	FIGURE & KEY No.	DESCRIPTION
QA4-1117-000	1- 3	TRAY, CD SUB	QM3-0015-000	3- 6	SIDE COVER L UNIT
QC1-6201-000	7- 2	SPRING, LEAF	QM3-0016-000	3- 4	PANEL COVER R UNIT
QC1-6202-000	7- 11	SPRING, COIL	QM3-0017-000	3- 11	INNER COVER UNIT
QC1-6212-000	10- 10	GEAR, IDLER CARRIAGE LIFT	QM3-0465-000	1- 1	CASSETTE UNIT
QC1-6225-000	10- 21	GEAR, EJECT	QM3-0833-000	5- 1	LOGIC BOARD ASS'Y
QC1-6230-000	10- 19	BELT, PAPER FEED	QM3-0842-000	6- 3	ENCORDER MULTI HARNESS ASS'Y
QC1-6232-000	10- 3	SPRING, TENSION	QM3-1271-000	10- 22	TIMING SENSOR UNIT
QC1-6526-000	7- 1	FILM, TIMING SLIT STRIP	QM3-1273-000	10- 7	CARRIAGE LIFT SENSOR UNIT
QC1-6573-000	3- 10	DAMPER, DOOR	QM3-1274-000	10- 15	PE SENSOR UNIT
QC1-6619-000	8- 3	SPRING, TORSION	QM3-1287-000	6- 2	MOTOR MULTI HARNESS ASS'Y
QC1-9024-000	3- 2	EMBLEM, PIXMA	QM3-1292-000	6- 1	DC CONNECTOR ASS'Y
QC1-9937-000	10- 5	SPRING, TORSION	QY5-0179-000	4- 1	ABSORBER KIT
QC1-9939-000	10- 17	BUSHING	QY6-0067-000	1- 5	PRINT HEAD
QC1-9941-000	10- 1	CAM, SWING ARM LOCK	QY9-0057-000	T- 1	LUBE, FLOIL KG107A, OIL
QC2-0009-000	7- 7	CAM, CARRIAGE SHAFT L	WE8-6427-000	7- 12	CORE, RING
QC2-0010-000	7- 4	CAM, CARRIAGE SHAFT R	WT3-5156-000	1- 6	CORD, POWER
QC2-0030-000	9- 4	COVER, INK TUBE	WT3-5182-000	1- 6	CORD, POWER
QC2-0032-000	9- 3	TUBE, INK	XA9-1258-000	S- 2	SCREW, TAP, WASHER HEAD, M3X12
QC2-0037-000	10- 8	CARRIAGE LIFT GEAR BASE UNIT	XA9-1437-000	S- 5	SCREW, BIND, M2.6X4(RED)
QC2-0038-000	10- 12	GEAR, OUTPUT CARRIAGE LIFT	XB1-2200-405	S- 6	SCREW, M2X4
QC2-0039-000	10- 11	SPRING, TORSION	XB1-2300-405	S- 1	SCREW, MACH.BH, M3X4
QC2-0040-000	10- 14	LEVER, SWING ARM LOCK	XB2-4300-605	S- 3	SCREW, W/WASHER, M3X6
QC2-0052-000	10- 13	SPRING, TENSION	XB4-7300-805	S- 4	SCREW, TP, BH3X8
QC2-0080-000	7- 3	CLIP, SHAFT R			
QC2-0083-000	7- 5	CLIP, SHAFT L			
QC2-0085-000	9- 5	TUBE, INK JOINT			
QC2-0414-000	7- 9	SHAFT, CARRIAGE			
QC2-0424-000	3- 12	ARM, RELEASE			
QC2-0435-000	8- 1	ABSORBER, INK			
QC2-0475-000	10- 18	FILM, TIMING SLIT DISK			
QC2-0476-000	8- 4	FILM, TIMING SLIT DISK EJECT			
QC2-1873-000	10- 9	GEAR, INPUT CARRIAGE LIFT			
QC2-1877-000	3- 14	COVER, INK MIST			
QC2-1886-000	3- 8	COVER, I/F			
QC2-1887-000	3- 7	MAIN CASE			
QC2-1911-000	3- 13	COVER, MAIN CASE			
QC2-1925-000	1- 2	COVER, CASSETTE			
QC2-2063-000	6- 4	COVER, PAPER FEED GUIDE			
QK1-0278-000	1- 6	CORD, POWER			
QK1-0279-000	1- 6	CORD, POWER			
QK1-1061-000	1- 6	CORD, POWER			
QK1-1500-000	7- 6	MOTOR, CARRIAGE			
QK1-1502-000	10- 16	MOTOR, PAPER FEED			
QK1-2830-000	9- 1	CABLE, PANEL			
QK1-3031-000	2- 1	AC ADAPTER: 100V-240V 50/60HZ			
QL2-0938-000	7- 10	IDLER PULLEY ASS'Y			
QL2-1449-000	1- 4	CDR TRAY ASS'Y			
QL2-1450-000	10- 2	PR LIFT SHAFT ASS'Y			
QL2-1490-000	10- 20	FEED ROLLER ASS'Y			
QM2-3886-000	10- 6	PRESSURE ROLLER ASS'Y			
QM2-3890-000	10- 4	PAPER GUIDE UNIT			
QM2-3902-000	6- 5	SHEET FEEDER UNIT			
QM2-3999-000	7- 8	CARRIAGE UNIT			
QM3-0001-000	8- 2	PLATEN UNIT			
QM3-0007-000	9- 2	PURGE UNIT			
QM3-0010-000	4- 2	BOTTOM CASE UNIT			
QM3-0011-000	3- 3	ACCESS COVER UNIT			
QM3-0012-000	3- 1	PAPER SUPPORT UNIT			
QM3-0013-000	3- 9	FRONT DOOR UNIT			
QM3-0014-000	3- 5	SIDE COVER R UNIT			